



DIALOGUE INSTITUTE

# ANNUAL REPORT

2019



---

1700 N. Broad Street, Suite 315 /  
Philadelphia, PA 19121-0843

info@dialogueinstitute.  
org 215.204.7570



# **CONTENTS**

- 1. WHAT'S NEW AT THE DI?**
- 2. WELCOME DI STAFF**
- 3. WELCOME DI BOARD MEMBERS**
- 4. MJAC RECEPTION FOR SCHOLARS**
- 5. OPEN DIALOGUE TRAINING**
- 6. RELIGIOUS PLURALISM TOURS**
- 8. SUSI STUDENT UPDATE**
- 9. SUSI SCHOLAR UPDATE**
- 10. SUSI STUDENT STORIES**
- 11. BUSINESS ETHICS CONFERENCE**
- 12. MATCHING GIFTS CAMPAIGN**
- 13. FINANCIAL REPORT**
- 14. DONORS**

# Thank you for supporting the Dialogue Institute for another year!

Your support during the 2018-2019 fiscal year helped the Dialogue Institute to:



Host **4** international lecturers including Klaus Leisinger, Dr. Achmed Munjid, Dr. Effiong Udo, Sheik Ghassan Manasra



Host **20** students from India, Indonesia, Iraq, Lebanon, and Egypt



Host **18** Scholars from Jordan, Ethiopia, Myanmar, Lebanon, China, Turkey, Argentina, Indonesia, Malaysia, Finland, India, Kazakhstan, Austria, Philippines, Azerbaijan, and Kenya



Earn international recognition for global interfaith leadership in **3** countries Singapore, Abu Dhabi, and Nigeria.

# Welcome to the Dialogue Institute!

STAFF

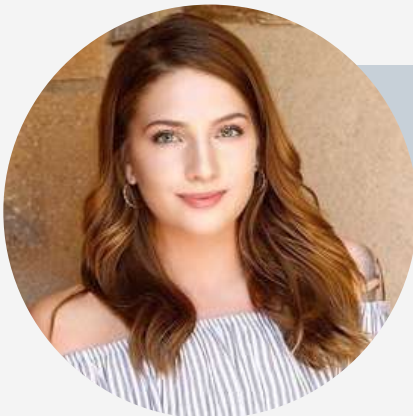
PAGE 2



## David Krueger

Dr. David Krueger joined the Dialogue Institute as a part time Program Director in the fall of 2019. Dr. Krueger worked with the Dialogue Institute on Study of the United States Institutes (SUSI) student and scholar Religious Freedom Institutes for several years.

He also works at Inside- out Prison Exchange Program center on Temple University Campus as a Public Pedagogy Consultant. Additionally, Dr. Krueger is an adjunct professor at Temple University in the Center for Liberal Arts Religion Department teaching Religion and Philadelphia. As a Religious Studies scholar and Historian, Dr. Krueger is currently using his experience as a Philadelphia tour guide to provide Religious Pluralism Walking Tours at the Dialogue Institute. This is just one of the many programs Dr. Krueger is helping to expand at the Dialogue Institute.



## Sayge Martin

Sayge Martin is the Dialogue Institute's Intern IT Specialist. Sayge interned with the Dialogue Institute as a Program Associate on the Study of the United States institutes (SUSI) Students Religious Freedom Institute during the summer of 2019.

Following her summer intern position, Sayge became a part time intern with the Dialogue Institute doing technological work following Jordan Iezzi's departure. Sayge is a graduate of Albright College where she earned her Bachelor's degree in Video Game Design/Simulation and Digital Media in addition to specializing in Religious Studies. Sayge is working to expand the Dialogue Institute's social media presence as well as assist in creating virtual course offerings. The Dialogue Institute is delighted to have Sayge and her silks on board as a permanent member of the team.

# Welcome to the Dialogue Institute!

## BOARD MEMBERS

PAGE 3

### Kay Yu

Kay Yu is a Litigation Labor & Employment ERISA Litigation lawyer in the city of Philadelphia who joined the Dialogue Institute Board in May of 2019. Kay attended Columbia College and earned her law degree at Georgetown Law.

She is an active advocate for the Philadelphia community and handles issues of civil rights, disabilities, discrimination, human relations and constitutional law. In 2018, the Philadelphia Bar Association recognized Kay as a recipient of its acclaimed Justice Sonia Sotomayor Diversity Award. She was also named Attorney of the Year by the Asian Pacific American Bar Association of Pennsylvania. In 2019, Kay participated in our SUSI Scholars Religious Freedom program and even accompanied the scholars on their study tour to Arizona and Washington, D.C. Kay quickly formed great relationships with the scholar cohort as well as Dialogue Institute staff this summer. The Dialogue Institute is grateful for Kay's involvement and is eager to have her involvement in more Dialogue Institute programs.



### Reverend Mark Tyler

Rev. Dr. Mark Tyler joined the Dialogue Institute Board in May of 2019. He is senior pastor at Mother Bethel A.M.E. Church in Philadelphia, the oldest African Methodist Episcopal church in the United States. Rev. Dr. Tyler earned his Masters of Divinity at Payne Theological Seminary and went on to obtain his PhD at The University of Dayton in Educational Leadership.

He has taught at Payne Theological Seminary, New Brunswick Theological Seminary as well as at the Methodist Theological School in Ohio: MTSO. Rev. Dr. Tyler became the pastor for Mother Bethel in 2008. Rev. Dr. Tyler is a social justice advocate and is a member of POWER, Philadelphians Organized to Witness, Empower, and Rebuild. For over a decade, Rev. Dr. Tyler has welcomed the Dialogue Institute's international students to worship and dialogue at Mother Bethel, A.M.E Church. Rev. Dr. Tyler discusses topics such as power, race, inclusion, and social justice with our students which always makes for a rich conversation. The Dialogue Institute is delighted to welcome Rev. Dr. Mark Tyler as a new board member.





## Muslim-Jewish Reception

*For SUSI Scholars*

---

For the past few years, the SUSI scholar program has benefited from participation by members of the Muslim Jewish Advisory Council (MJAC), a national organization that works to combat the rise in hate crimes and

promotes the positive image of Muslim and Jewish citizens of the United States. Majid Alsayegh, chair of the Dialogue Institute board of directors, is also an active member of MJAC and arranged for a reception for MJAC leaders and the 2019 SUSI scholars at the home of another Dialogue Institute board member, Anne Schroeder. At this year's reception, our scholars had the privilege of spending time with Rabbi David Saperstein, who served as the U.S. Ambassador-at-Large for International Religious Freedom under President Obama and Dr. Ari Gordon, who serves as the Director of U.S. Muslim-Jewish Relations for the American Jewish Committee. Imam Talib M. Shareef, of the historic Masjid Muhammad, the Nation's Mosque in Washington D.C. was also invited, but was unable to attend due to a delayed flight. Two other leaders, Imam Albert Sabir and Fitrah Muhammad from the mosque spoke on the imam's behalf. The evening conversation centered on strategies for working on social justice issues across religious differences and the role that one's faith plays in working in diverse coalitions.

## OPENDialogue™ Training Series at Montgomery Community College

Montgomery County Community College (MCCC, Montco, or MC3) is a public community college in Blue Bell, Montgomery County, PA. The campus serves 12, 800 students who desire to blend academic study, technical training, and artistic endeavors with working lives, families, and colleagues. The campus diversity faces potential polarization into segmented factions on campus. The Dialogue Institute will do a series of three training sessions in March, April, and May of 2020 to emphasize patience, curious interest in “the other,” and creating understanding of differences that could otherwise create suspicion, distrust, or disrespect.



OPENDialogue applies ten dialogue principles (on the DI/JES website) to specific situations. The basic four components of the methodology are:

- Open to “the other”
- Practice Commonalities
- Engage Differences
- Navigate New Horizons

In short or long formats, participants build trust in a diverse community by sharing identity exercises and then identifying the common ground they stand on in the face of differences. A mosque congregation will share a trust in the Qur'an. A campus shares a stake in attracting and maintaining a committed student body. A church and synagogue across the street from one another share a desire to create a peaceful neighborhood. A retirement community shares a need for significant health benefits. Once a group or community can articulate what they hold in common, then they are able to identify the obstacles or fears or challenges for maintaining that common ground with trust. The dialogue principles and exercises in critical thinking and creative compassion provide new skills for daily living. The hope is to imbue skills that, when practiced over time in a variety of contexts, can overcome misunderstanding and reduce prejudice. The OPENDialogue courses, designed to meet the issues of a particular situation or group of people, will model and practice skills that preserve individual expression and adapt to differences on behalf of the common good. Montgomery County Community College is to be commended for its courage, hope, and confidence in taking the stop to train faculty and staff in the skills of dialogue.



## Religious Pluralism Education and Tourism in Philadelphia

One of the newer initiatives for the Dialogue Institute is our religious pluralism tours program. More than 45 million visitors come to Philadelphia each year and a significant number come to learn about the history of America's birthplace. The Dialogue Institute has an opportunity to shape the public's understanding about how the nation has grappled with religious diversity, both in the past and in the present.

Building upon our experience of using Philadelphia as a laboratory to study the history of religious pluralism for our SUSI programs, Dr. David Krueger has been coordinating an effort to offer historical tours to the general public. These tours highlight the complexity and diversity of the American religious landscape of early Philadelphia and illustrate some of the challenges and opportunities that emerge in religiously diverse settings. The tour also demonstrates the importance that laws have played in protecting religious freedom and also highlights both powerful and marginalized voices and experiences.







Another unique dimension of these tours is that they include an opportunity for participants to discuss and debrief about the tour experience in a meeting space provided by the historic Christ Church, which is part of the National Park Service. The tours are intended to draw the public into other Dialogue Institute programs, including our OPENDialogue™ sessions. Dialogue Institute staff members are developing a training program for guide-facilitators to lead the tours starting in the spring of 2020.

While the base-level tour focuses on religious pluralism in early Philadelphia, the program can also be adapted and scaled to customized formats. One such customization was recently implemented in an event sponsored in collaboration with the Philadelphia-area chapter of the American Jewish Committee (AJC). The AJC worked with the Dialogue Institute to host an event titled, “Civil Rights Tour of Philadelphia: Exploring Black and Jewish Issues of Justice.” The event brought a group of 40 (mostly) Jewish leaders to Mother Bethel African Methodist Episcopal church to attend a worship service, to dialogue with Rev. Dr. Mark Tyler (also a Dialogue Institute board member), and participated in a walking tour of African American history Old City Philadelphia.



# 2019 SUSI Student Projects

In 2019, the Dialogue Institute partnered with Meridian International Center, a grant implementing organization out of Washington, D.C. Meridian led the submission process for the Study of the United States Institutes (SUSI) students Religious Freedom grant for the Dialogue Institute, in consortia with five other institutes.

The Meridian International Center team, led by Meg Poole Senior Program Officer, Director of Global Service Leaders, hosted a total of 200 students in the summer of 2019 and 20 students during a FIUTS winter program at University of Washington, in 2020 to finish out the first year of the three year grant.

Meridian International Center hosted a conference in Washington, D.C for all of the SUSI consortium students during the students' last few days of their five- week program. The students were provided a unique networking opportunity and met 160 other SUSI students who participated in institutes within our consortium. Several of the 2019 students collaborated on projects to enhance their community upon returning home. One such instance includes two of the Dialogue Institute's SUSI students, Aditya Devulapally and Faiz Jiwani, who collaborated with Ashvin Zeta Joseph, a SUSI Alumni FIUTS, from institute to create "The Dialogue Project" in their hometown of Hyderabad, India. Aditya, Faiz, and Ashvin won follow on grant money from Meridian International Center to start up The Dialogue Project.

Two other 2019 Dialogue Institute SUSI alumni won follow-on grant money from Meridian International Center. Mursid Yusuf, of Indonesia, won grant money to combat hate speech and misinformation around Indonesia. Mursid's project launched in February 2020 and will continue throughout the year. Lugein Al- Salami, of Iraq, also won a follow-on grant to complete religious pluralism work in her hometown of Baghdad, Iraq.

The Dialogue Institute is looking forward to our new student cohorts and our continued work with Meridian. Follow the Dialogue Institute on social media or subscribe to our newsletters to get regular updates on our student cohorts as we follow them on their journey.



# SUSI Scholar Program 2019

---

The Dialogue Institute hosted the third cohort of the Study of the U.S. Institutes program on Religious Freedom. The institute is run with the support of the Education and Cultural Affairs division of the U.S. State Department. The program included a 4-week residential program in Philadelphia, which opened with an orientation tour of Philadelphia's historical and religious sites with Dr. David Krueger and a Temple University reception.

Some of the other highlights of the Philadelphia program include: a meal with an Amish family in Lancaster County, several lectures by leading scholars of religion, visits to area mosques, temples, synagogues and churches, a dialogue session with a group of incarcerated men at a state prison outside of Philadelphia, and an opportunity to observe a group of Republicans and Democrats in a conversation facilitated by the Better Angels organization. The residential program also included a short getaway to New York City and a visit to Ellis Island, a mosque in Harlem, and the United Nations.

The Summer Institute also included study tours to Arizona and Washington D.C. The Arizona trip was hosted by Dialogue Institute executive director Sergio Mazza and wife Lora. The week-long trip included visits to Phoenix, Sedona, Flagstaff, a Navajo Reservation, and the Grand Canyon. We are grateful for our various Arizona program collaborators including Mesa Community College, Northern Arizona University, The Martin- Springer Institute, and several Sikh, Latter-Day Saints, and Christian faith communities.

The second study tour took place in Washington D.C. The week included our typical visits to Capitol Hill, the Holocaust Museum and Memorial, and the Newseum. A new addition this year was an overnight visit to the Montpelier Estate in Virginia and a day-long conference on various themes related to religious freedom in the U.S. The scholars also had opportunities to share their research at public symposiums that were well attended. The Dialogue Institute staff are grateful for our 16 new friends from around the world and we look forward to future collaborations.





# Where Are They Now?

## *SUSI Student Stories*

As our SUSI alumnae move forward in their lives, they tell us of the remarkable ways in which they assume civic responsibilities both in their professional lives and in their avocations. An Egyptian alum runs a blog that reached 10,000 readers on the topic of countering terrorism. An Iraqi alum is in medical school to become a doctor who can speak to his patients about differing religious views when necessary. A Jordanian alum is working in the political sphere with an aspiration to become an ambassador. Each of their action plans made during their stay in the U.S. formed the basis of their work now.



**The Lebanese situation for our graduates is particularly acute. We would like to highlight Christelle Barakat, Mohammed Sleiman, and Bernard Naddaf. The young adult population has increased dramatically in recent years.**

**Lebanon needs to create six times more opportunities for employment to accommodate the 23,000 young people who join the labor market each year, an EU study reports. The employment rate at present is 35%. As a result, our alums who have the State Department experience to draw on often emigrate. Mohammed Sleiman won a follow-on Fulbright award and is studying engineering in the U.S. now. Christelle Barakat has just graduated with a degree in conflict resolution and international affairs and hopes to do graduate study out of Lebanon. She works only part-time at present at a placeholder position. Many young adults have taken to the streets to protest for more jobs and better employment,. One such young person is our SUSI alum Bernard el Naddaf. As he explains to a reporter for the Financial Times in Lebanon, "It's not sustainable to live here. That's why most Lebanese youth are aiming to leave," He added,"It's hard for me to get a house, a sustainable income."**

**We are grateful that our SUSI experience has helped these young adults know how to speak up for their generation such that others do not have to emigrate or if they do, they can return to Lebanon for work and family.**





## Business Ethics Conference at the DI *May 2019*

Dialogue Institute Chairman, Majid Alsayegh, and Executive Director, Sergio Mazza, hosted Dr. Klaus Leisinger on May 8th for a discussion on World Ethos for Business at the Museum of the American Revolution in Philadelphia. This lecture was made possible through the support of Dipl. Eng. Karl Schlecht and the Karl Schlecht Foundation.

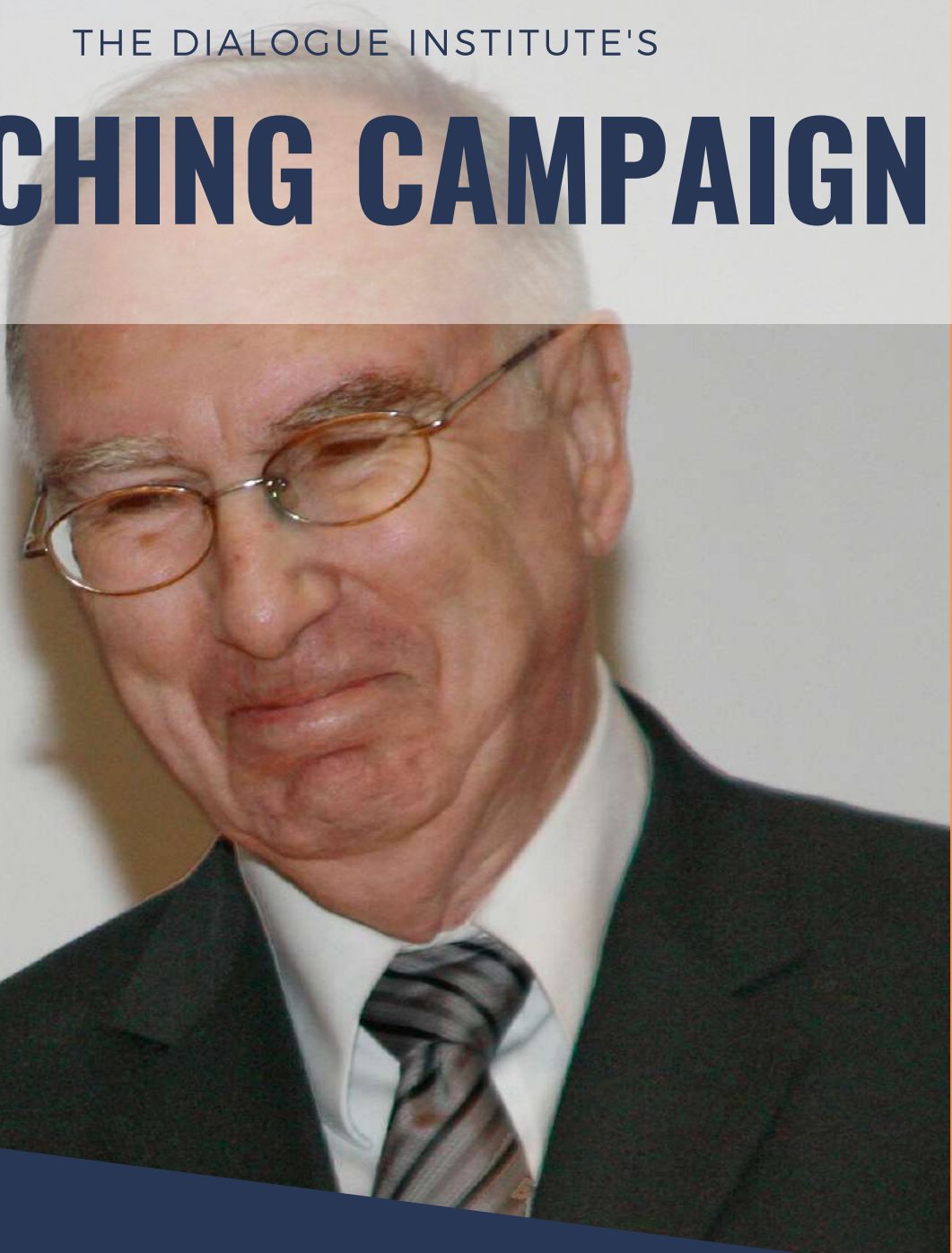
Dr. Leisinger's lecture focused on Critical Issues for Business in the 21st Century and he addressed a room full of professionals from the private and public sector with decades of experience. All participants were highly engaged as Dr. Leisinger discussed the risks and challenges of bringing good ethics into corporate governance and the manner in which those businesses can be sustainable.

As the founder and president of Global Values in Basel, Switzerland, Dr. Leisinger, works to apply ethical norms and values in everyday practice in business, politics and society. His lecture discussed necessary steps for businesses to build public trust which led into an engaging discussion among all attendees.



THE DIALOGUE INSTITUTE'S

# MATCHING CAMPAIGN

A portrait of Dr. Leonard Swidler, an elderly man with white hair and glasses, wearing a dark suit, white shirt, and striped tie. He is looking slightly down and to the left. The portrait is framed by an orange border.

Dr. Leonard Swidler has announced his heartfelt wish to help sustain global interfaith, intercultural scholarship, programming, and grassroots dialogue training well into the future. First, during 2020, he will match dollar per dollar, up to 100K, any donation to the Dialogue Institute/Journal of Ecumenical Studies. In addition, Dr. Swidler will make a 1.5 million bequest for the Dialogue Institute/JES to continue his legacy. He hopes the 1.5 million will be matched before his death and then his bequest will be doubled. All gifts, large and small are welcome. Planned giving options are available.

## STATEMENT OF FINANCIAL POSITION

FOR YEARS ENDED JUNE 30, 2019 AND 2018

<b>ASSETS</b>	<b>2019</b>	<b>2018</b>
CASH AND CASH EQUIVALENTS	32,990	23,413
GRANTS RECEIVABLE	-	18,986
PROMISES TO GIVE	68,000	-
INVESTMENTS	296,283	386,893
PROGRAM DEPOSITS	29,604	4,498
<b>TOTAL ASSETS</b>	<b>426,877</b>	<b>433,790</b>

<b>LIABILITIES &amp; NET ASSETS</b>	<b>2019</b>	<b>2018</b>
ACCTS. PAYABLE AND ACCRUED DEFERRED REVENUE	33,241	44,049
	107,088	29,950
<b>TOTAL LIABILITIES</b>	<b>140,329</b>	<b>73,999</b>
<b>TOTAL NET ASSETS</b>	<b>286,548</b>	<b>359,791</b>
<b>TOTAL LIABILITIES AND NET ASSETS</b>	<b>426,877</b>	<b>433,790</b>

## STATEMENT OF ACTIVITIES

	<b>2019</b>
<b>SUPPORT &amp; REVENUE</b>	
FOUNDATION GRANTS	139,806
INDIVIDUAL CONTRIBUTIONS	194,040
GOVERNMENT GRANTS	414,005
DI PROGRAM INCOME	2,249
JES SALES & ROYALTIES	16,697
INVESTMENT INCOME	14,400

**TOTAL SUPPORT & REVENUE** **\$781,197**

<b>EXPENSES</b>	
GOVERNMENT GRANT PROGRAMS	698,721
GENERAL/ADMINISTRATIVE	145,790
FUNDRAISING	9,929

**TOTAL EXPENSES** **\$854,440**

**NET DEFICIT** **\$(73,243)**



## Major Grantors

U.S. Department of State  
Meridian International  
Karl Schlecht Foundation

## Donors

**July 1, 2018 - January 1, 2020**

### **10,000+**

Enlightened World  
Foundation

### **\$5,000 - \$9,999**

Ann Schroeder

### **\$1,000 - \$4,999**

Sergio & Lora Mazza  
Majid Alsayegh  
David Etheridge  
William Cullinan  
City Etemed  
Howard Cohen  
Paul Mojzes  
Elizabeth Tuttle Fund

### **\$500 - \$999**

Nancy Krody  
African Middle Eastern  
Leadership Project  
Amid I. Ismail

### **\$100 - \$499**

Ann Marie B. Bahr  
Yashpal S. Bains &  
Mankit K. Bains  
Ernest Mayer & Irene  
Mayer  
F. Samuel Brainard  
Krystyna Gornick  
Grant Calder  
David Krueger  
Joseph Ruane  
Genienne Navarro  
Kay Yu  
Lewis Eron  
Rev Joseph Y. Seville  
Susan Frank  
Abraham Leibson  
Lillian Sigal  
Jay Sanchez  
Saori Choulos  
Andieleigh Laudisio  
Marcelino Cortez